

Leak Detection Solutions

Dry Helium Leak Detector



ASM Graph D+

The ASM Graph D+ is equipped with a three-stage vacuum system. It comprises a dry and particle free high performance roughing pump, a rugged molecular pump with optimum compression ratio for the detector plus a second molecular pump for optimum performance in fine vacuum.

Advantages:

- **Very fast pump down to maximum test pressure**
Even when testing large objects or massive outgassing
- **Very fast pump down to most sensitive mode**
Crossover pressure to fine leak mode at 0.5 mbar
- **Dry and particulate-free vacuum circuit with high crossover pressure and fast recovery after detection of a massive leak.**
- **High mobility by integrated transport cart.**
Comprehensive package with space for **accessories** and tracer gas bottle.

Specifications:

	Units	ASM Graph D+
Minimum detectable helium leak	mbar · l/s	$5 \cdot 10^{-12}$
Maximum inlet test pressure	mbar	10
Helium pumping speed at inlet of the unit	l/s	1.3
Roughing capacity	m ³ /h	14
Start-up time	min	< 3
Power consumption	kW	< 1
Inlet port size	DN ISO-KF	25

Applications:

- Clean room applications
- Space and aeronautics
- Gas supply lines and panels
- Accelerators
- Research and Development

Accessories and options:

- Helium spray gun
- Remote control – cable-bound or wireless
- Inlet particle filters
- Test chambers

Sniffer probes:



Rigid tip
(various tube lengths)

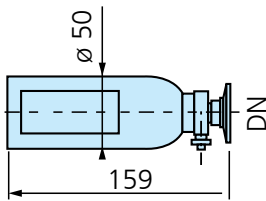


Flexible tip
(various tube lengths)

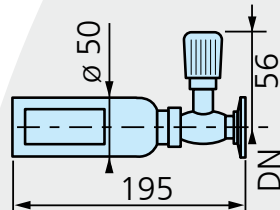


Special applications

Calibrated leaks:



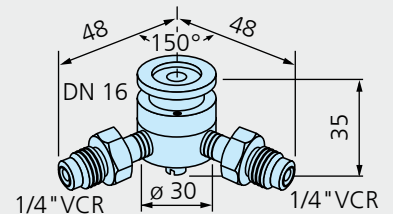
Integrated leak



External leak



Sniffing calibration accessories



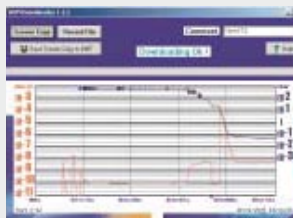
Gas line calibrated leaks

Software:



ASM View

Leak detector control via PC. Data display and storage on PC.



ASM Downloader

Downloads files from ASMGraph memory to PC.



ASM Pocket

Software package for wireless remote control of leak detector via PDA or smartphone. Data is displayed and stored on the mobile device.

For further information please see:

http://www.adixen.co.uk/helium-leak_detectors.php